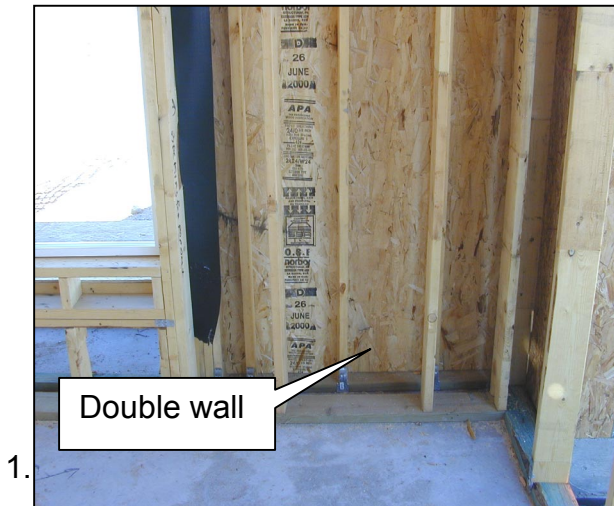


Double Walls

Double walls are troublesome to air seal and insulate. Picture one shows a double wall and picture two shows that it is open to the attic. This opening can cause large energy consumption and comfort complaints.



The easiest way to ensure this wall will not contribute to air leakage and insulation failure is to place rigid sheathing such as oriented strand board (OSB), plywood, sheetrock or Thermoply™ on the back side of the interior wall as shown in pictures 3, 4, and 5.

